



AFRICAN HILLS

SAFARI LODGE & SPA

Conference Portfolio

2025 - 2026





WELCOME

African Hills Safari Lodge & Spa is situated on the Plumari Private Reserve in Magaliesburg. Just an hour from Johannesburg or Pretoria, African Hills offers guests a memorable wildlife experience.

African Hills Safari Lodge & Spa caters for meetings, conferences, teambuilding initiatives and training course in both the Main Lodge and Conference Centre. Spa relaxation is available to conference delegates after or during a day of meetings.

Plumari Private Reserve is set within a pristine wilderness area of 6800 hectares with natural African bushveld and an abundance of flora, fauna, birdlife and wildlife. Game drives and elephant experiences are scheduled daily to make your conference unforgettable.

Other activities that delegates are able to choose from are Petroglyph Walks, Mountain Hikes, Sip & Safari Wine Tasting, Plumari Bush Challenge, Battlefield & Geo-heritage Tours as well as our Museum with carts and wagons dating back to the 1800s, as well as our onsite Spa.

The Conference Centre is abundant with African symbology, rich earthy colours and unique African décor focal points. All conference rooms are in the Conference Centre and afford great views of the Magaliesberg mountain range and reserve.

We look forward to hosting you and your team.

Management & Staff AFRICAN HILLS SAFARI LODGE & SPA





CONFERENCE TARIFFS

Day Conference Package:
R1240 per person per day

- Tea & Coffee on Arrival
- Mid-morning and/or Afternoon tea, coffee & Chef's selection of Snacks
- Lunch
- Conference Venue
- Standard Equipment including a Data Projector

24-Hour Conference Package:
R3660 per person sharing
R4320 single occupancy

- Tea & Coffee on Arrival
- Mid-morning and/or Afternoon tea, coffee & Chef's selection of Snacks
- Lunch
- Dinner
- Accommodation
- Breakfast
- Conference Venue
- Standard Equipment including a Data Projector

ALL RATES ARE VALID FROM **1 NOVEMBER 2025 – 31 OCTOBER 2026** AND ARE SUBJECT TO CHANGE

Conference Special

"Sunday Night Blues" – starting your 24-hour conference on a Monday morning? Stay over on the Sunday night free and pay only for meals (T's & C's apply).





Venue Capacity

Room Name	Seating Capacity			Room Dimensions (m)		Area m2
	U shape	School room	Theatre	Length (m)	Width (m)	
Akira	80	150	180	20.4	12.8	261.1
AKIRA CAN BE SUBDIVIDED INTO THREE VENUES DEPENDING ON REQUIREMENTS						
Akira 1	30	40	60	6.8	12.8	87
Akira 2	30	40	60	6.8	12.8	87
Akira 3	30	40	60	6.8	12.8	87
Amira	10	16	20	4.8	8.6	41.3
Fikira	20	30	50	7	8.6	60.2
Hakima	20	30	50	7	8.6	60.2



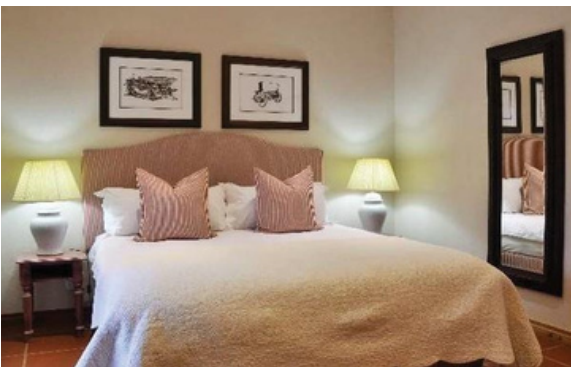


ACCOMMODATION



SUITE

Indulge in pure luxury in our suite, overlooking the dam and mountain range. King size beds, TV, aircon, bathtub, shower, basin & toilet.



GARDEN COTTAGE

2 units each with 3 bedrooms - ideal for families. King size beds, TV, aircon, bathtub, shower, basin & toilet



STANDARD ROOMS (STAND ALONE & SEMI-DETACHED)

35m² rooms, stand-alone units closest to the Main Lodge overlooking the pool and dam. TV, aircon, King size beds, both tub, shower, basin & toilet



DELUXE ROOM

Most of these 45m² overlook the dam and some can split in 2x ¾ beds, TV, aircon, both tub, shower, basin & toilet



GARDEN UNIT

Split into two rooms {A & B} each with their own bathroom (A has a shower only & B has a shower and bath). King size beds, TV, aircon, basin & toilet.



WILDLIFE CONFERENCE EXPERIENCE

Activities	Time		Duration	Rates pp
Game Drives	Mornings: Summer: 06h30 / 09h30 Winter: 09h30	Afternoons: Summer: 16h00 Winter: 15h00	2.5h	R615
Ellie Experience	On request	On request	1.5h	R1095
Petroglyph Hike	On request	On request	2h	R510
Mountain Hike	On request	On request	3h	R660
Bush Challenge		On request	4 hours	R1205
Sip & Safari		On request		R1250/R1500
Geo-Heritage Tour		On request		R925
Battlefield Tour			4 hours	R925





DIRECTIONS

From OR Tambo International Airport (Johannesburg - approx. 1 hr. 30 min)

Follow the signs to Johannesburg until you come to an interchange with the N1 Highway. Follow the N1 North/Roodepoort or N1 Pretoria signs. Follow this to Roodepoort (pass Sandton on the left) and take the 14th Avenue off-ramp (see Sandton below)

From Sandton/Fourways

Travel North on Rivonia Road or William Nicol Highway, until you reach the N1. Turn left towards Roodepoort. Continue to the 14th Avenue off-ramp and turn right into 14th Avenue (underneath the highway). Turn right at the next intersection on to Hendrik Potgieter Drive, heading towards Krugersdorp. Do not turn off this road, continue to the T-junction (Krugersdorp left and Hekpoort right – a Zenex garage will be across the road and to the right). Turn right at this T-Junction onto the R563 towards Hekpoort – it is important that you keep in the right-hand lane (do not take the N14 road to the left). Continue straight through farmlands and scenic hills to another T-junction, then turn left on to the R560. After about 8km, turn right on to the Doornhoek Road. Keep going until you reach the security gate at the entrance to Plumari Private Reserve. Please do not exceed 40km/hour and watch out for wild animals crossing. Stay in your vehicle and do not leave the main tar road. African Hills Lodge is 6kms from the T-Junction.

From Randburg

Travel out of Randburg on Malibongwe Drive (R512) and cross over the N14 highway. Stay on this road until the T-Junction in Broederstroom and turn left. Continue straight (you will pass Pecanwood Golf Estate) until you come to another T-junction. Here you will turn left on to the R560 and travel through the village of Skeerpoort. Stay on the R560 for approximately 28km and turn right on to the Doornhoek Road. Keep going until you reach the security gate at the entrance to Plumari Private Reserve. Please do not exceed 40km/hour and watch out for wild animals crossing. Stay in your vehicle and do not leave the main tar road. African Hills Lodge is about 6km from the T-junction.

From Pretoria Central (approx. 80km – 1 hr. 15 min from Loftus Versfeld)

Travel out of Pretoria on Struben Road towards Pelindaba. Go through Pelindaba Tollgate. The highway ends just after the tollgate. At the end of the highway off-ramp, turn left. At the T-junction, turn right (R104) towards Broederstroom. Stay on the R512 past Broederstroom and continue past Pecanwood Golf Estate to the next T-junction. Here you will turn left on to the R560 and travel through the village of Skeerpoort. Stay on the R560 for approximately 28km and turn right on to the Doornhoek Road. Keep going until you reach the security gate at the entrance to Plumari Private Reserve. Please do not exceed 40km/hour and watch out for wild animals crossing. Stay in your vehicle and do not leave the main tar road. African Hills Safari Lodge is about 6km from the T-junction.

From Centurion

Travel South from Centurion on the N14. Take the Diepsloot/Fourways R511 turn off. Turn left towards Erasmia. Travel for 2.6km and turn left on to the R511 towards Hennops. Continue until the 4 way stop. Here you will turn left (R104) towards Broederstroom Stay on the R512) past Broederstroom and past Pecanwood Golf Estate until you come to a T-junction. Here you will turn left on to the R560 and travel through the village of Skeerpoort. Stay on the R560 for approximately 28km and turn right on to the Doornhoek Road. Keep going until you reach the security gate at the entrance to Plumari Private Reserve. Please do not exceed 40km/hour and watch out for wild animals crossing. Stay in your vehicle and do not leave the main tar road. African Hills Safari Lodge is about 6km from the T-junction.

CONTACT US

TEL: (014) 577 2658/9 | **CELL:** 071 480 6567

EMAIL: conference@africanhillslodge.co.za

FAX: 086 630 2940

www.africanhillslodge.co.za

R560 | Doornspruit Road | Magaliesburg
PO Box 104 Magaliesburg 1791 | South Africa

