

### ATELIER Playa Mujeres Room Descriptions

**ATELIER Playa Mujeres features 431 suites** impeccably designed in spectacular marble and exotic woods, with top of the line luxury amenities and contemporary avant-garde furnishings that combine perfectly with stunning views of the golf course and the turquoise and azure hues of the Caribbean Sea.

**Junior Suite – King:** Luxurious suite with desk. With terrace or balcony.

- 59 m<sup>2</sup> (635 sq ft) Interior + 10 m<sup>2</sup> (107 sq ft) Exterior
- 1 King Size bed and double sofa bed
- View of golf course or ocean



**Junior Suite - 2 Double:** Luxurious suite with terrace or balcony.

- 59 m<sup>2</sup> (635 sq ft) Interior + 10 m<sup>2</sup> (107 sq ft) Exterior
- 2 Queen Size beds and single sofa bed
- View of golf course or ocean



**Junior Suite Ocean View – King:** Luxurious suite with desk. With terrace or balcony. Ocean view guaranteed.

- 59 m<sup>2</sup> (635 sq ft) Interior + 10 m<sup>2</sup> (107 sq ft) Exterior
- 1 King Size bed and double sofa bed
- Ocean view



**Junior Suite Ocean View – 2 Double:** Luxurious suite with terrace or balcony. Ocean view guaranteed

- 59 m<sup>2</sup> (635 sq ft) Interior + 10 m<sup>2</sup> (107 sq ft) Exterior
- 2 Queen Size beds and single sofa bed
- Ocean view



**Junior Suite Swim Out – King:** Luxurious suite with desk, terrace and semi-private swimming lane, with direct access from inside room.

- 63 m<sup>2</sup> (678 sq ft) Interior + 39 m<sup>2</sup> (420 sq ft) Terrace and Pool
- 1 King Size bed and double sofa bed
- Views of garden, public areas or pool



**Junior Suite Swim Out – 2 Double:** Luxurious suite with terrace and semi-private swimming lane, with direct access from inside room.

- 63 m<sup>2</sup> (678 sq ft) Interior + 39 m<sup>2</sup> (420 sq ft) Terrace and Pool
- 2 Queen Size beds and single sofa bed.
- Views of garden, public areas or pool



**Rooftop Suite:** Luxurious suite with desk, interior staircase with access to the private, spacious Rooftop terrace, which has hydro-massage bathtub, shower, half bathroom and shaded bed.

- 75 m<sup>2</sup> (807 sq ft) + 70 m<sup>2</sup> (753 sq ft) Rooftop Terrace
- 1 King Size bed and double sofa bed
- Views of ocean, pool and golf course



## INSPIRA SUITES

The unique service offered by **INSPIRA** offers guests the opportunity to enjoy an even more luxurious experience, complemented by amenities through the exclusive **INSPIRA Suite Services**<sup>®</sup>.

Guests in any of the **INSPIRA Suites** enjoy unique benefits, including:

- **Hola GM**<sup>®</sup>, a personalized letter and welcome amenity from the General Manager.
- **Well-come-in**<sup>®</sup>, aligns the senses from the moment you arrive, with a welcome cocktail, cool refreshing towels and a relaxing reflexology hand massage upon checking-in in a private area.
- Early Check-in for arrivals before 12:00 pm (subject to availability).
- Bar with Premium drinks, beers, water, teas and coffee; replenished daily.
- **INSPIRA Concierge** for special requests before, during and after your stay.
- **INSPIRA Pool**<sup>®</sup>, exclusive daytime access to the infinity pool on the fifth floor, with a spectacular ocean view.
- **Tablet on Demand**<sup>®</sup> for technology lovers (subject to availability).
- Digital newspapers and magazines (subject to availability).
- Free calls to Mexico, the USA and Canada.
- **Gourmet-to-Go**<sup>®</sup>, a gastronomical experience to pamper your palate when going on excursions (prior request).
- **Pet-it**<sup>®</sup> Amenities, an exclusive concept designed for guests' four-footed friends so they can also enjoy relaxing vacations, with a specially designed line of prepared amenities.<sup>1</sup>
- **Green Free**<sup>®</sup>, includes two rounds of golf on the Playa Mujeres golf course for stays of 5 nights or more in any INSPIRA Suite category.
- **Water Fun**<sup>®</sup>, includes two entrance admissions to the AquaWorld Marina for stays of 5 nights or more in any INSPIRA Suite category. Activities available at the Marina, include: Subsee Explorer (also includes pier tax), Flowrider, Aquabounce and Aquatwister.

<sup>1</sup> Only small breeds of dogs, up to 5 kgs (11 lbs), are accepted. Prior reservation required. Additional charges apply. Amenities are subject to availability.

**INSPIRA Junior Suite Ocean Front:** Luxurious suite with desk and a stunning ocean front view. Hydro-massage bathtub, shower and pergola on terrace. With **INSPIRA Suite Service**<sup>®</sup> amenities and services, including two rounds of golf for stays of 5 nights or more.

- 63 m<sup>2</sup> (678 sq ft) Interior + 31 m<sup>2</sup> (333 sq ft) Exterior
- 1 King Size bed and double sofa bed.
- Ocean front view



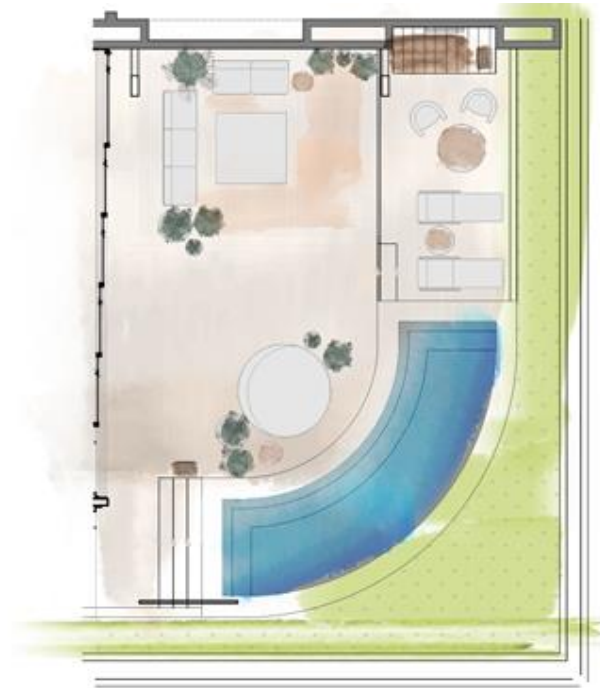
**INSPIRA Party Suite:** Luxurious suite near the **El Cielo Sky Bar**, with living room, dining room, desk and inside staircase with access to the private, spacious Rooftop terrace with a hydro-massage bathtub, shower, half bathroom and shaded bed. **INSPIRA Suite Service**<sup>®</sup> amenities and services, including two rounds of golf for stays of 5 nights or more.

- 98 m<sup>2</sup> (1,055 sq ft) Interior + 15 m<sup>2</sup> (161 sq ft) Rooftop Terrace
- 1 King Size bed and double sofa bed.
- Ocean front view



**INSPIRA Master Suite Ocean Front:** Luxurious ocean front Master Suite with panoramic windows, living room, dining room and bar. The spacious private terrace has a hydro-massage bathtub, shower, lounge and pergola. With **INSPIRA Suite Service**<sup>®</sup> amenities and services, including two rounds of golf for stays of 5 nights or more.

- 181 m<sup>2</sup> (1,948 sq ft) Interior + 98 m<sup>2</sup> (1,055 sq ft) Terrace
- 1 King Size bed and double sofa bed.
- Ocean front view



**INSPIRA Golf Village Master Suite:** Luxurious Master Suite with ocean view, desk, living room and dining room. The spacious private terrace has a hydro-massage bathtub, shower, lounge and pergola. With **INSPIRA Suite Service**<sup>®</sup> amenities and services. Includes direct access and private use of golf carts, as well as two rounds of golf for stays of 5 nights or more.

- 133 m<sup>2</sup> (1,431 sq ft) Interior + 110 m<sup>2</sup> (1,184 sq ft) Terrace
- 1 King Size bed and double sofa bed.
- Ocean view



Playa Mujeres Condo Complex SM-3 M-1 L-13 RTH-4  
Continental Isla Mujeres, Quintana Roo, México,  
C.P. 77400

[groupsales@adh.com](mailto:groupsales@adh.com)